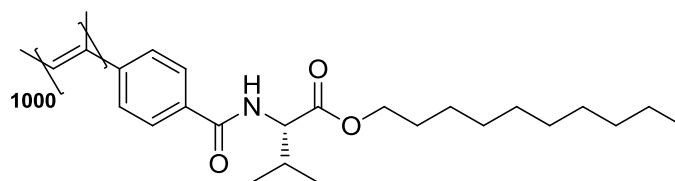


PPA-(L)-Val-dec 1:1000



Mn (Monomer) = 385.54 g/mol

ORD ($c = 0.22$, CHCl_3): $[\alpha]_{589}^{20} = 660 - 680$ (dependent on PDI and molecular weight).

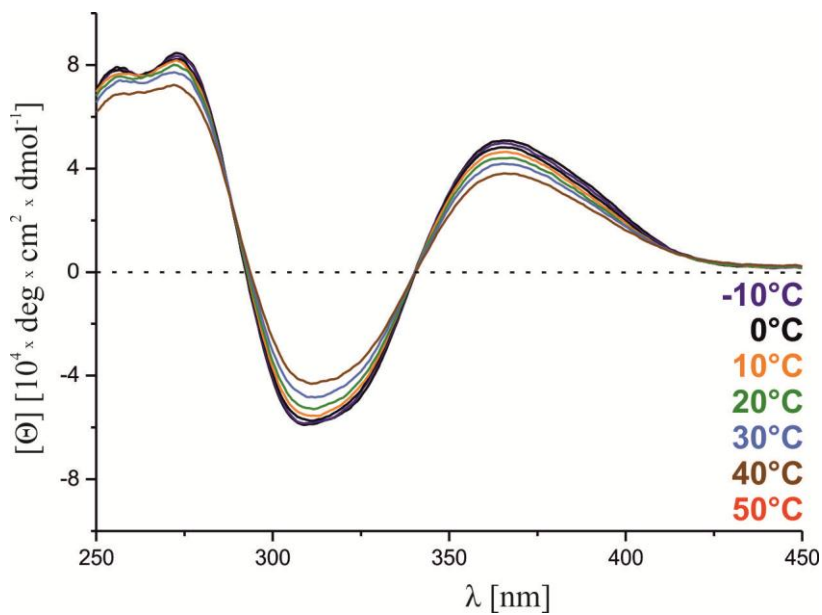


Figure 1: Temperature dependent CD spectrum of PPA-(L)-Val-dec in CDCl_3 .

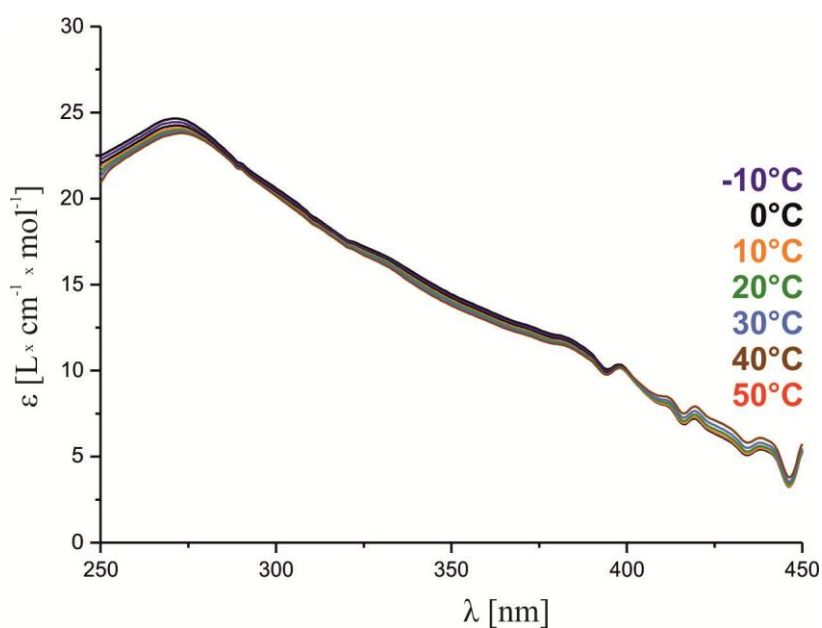


Figure 2: Temperature dependent UV spectrum of PPA-(L)-Val-dec in CDCl_3 .

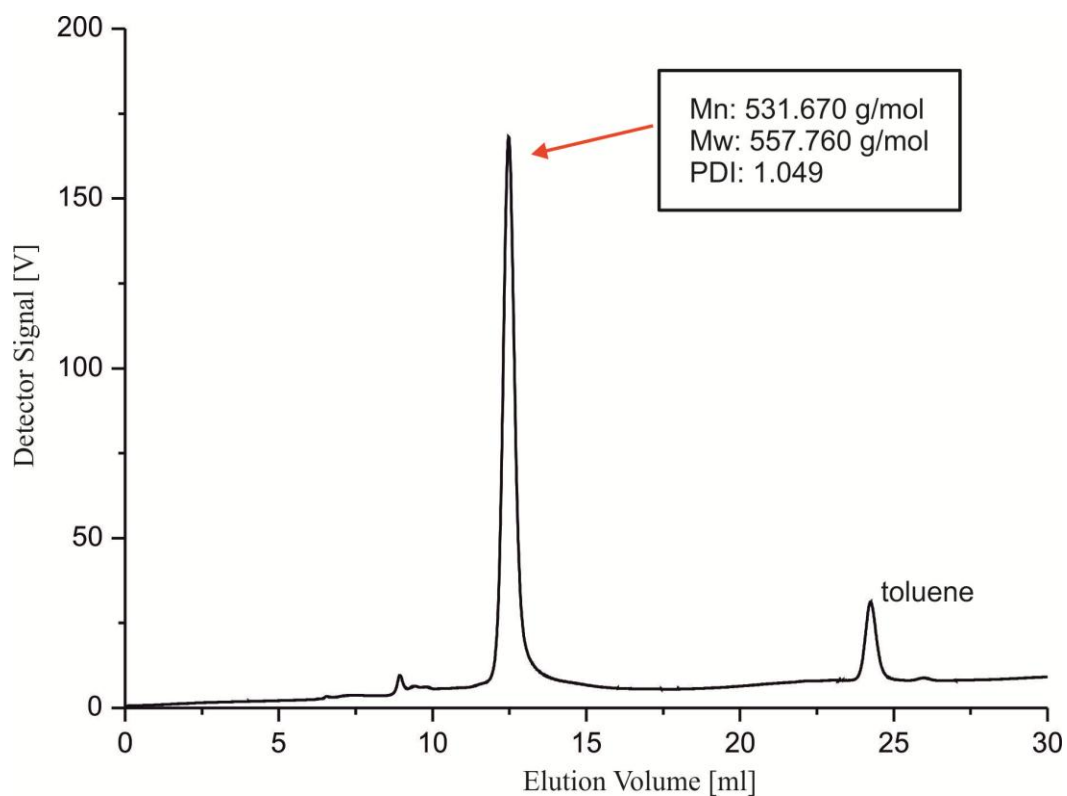


Figure 3: GPC analysis of **PPA-(L)-Val-dec** with THF as eluent.

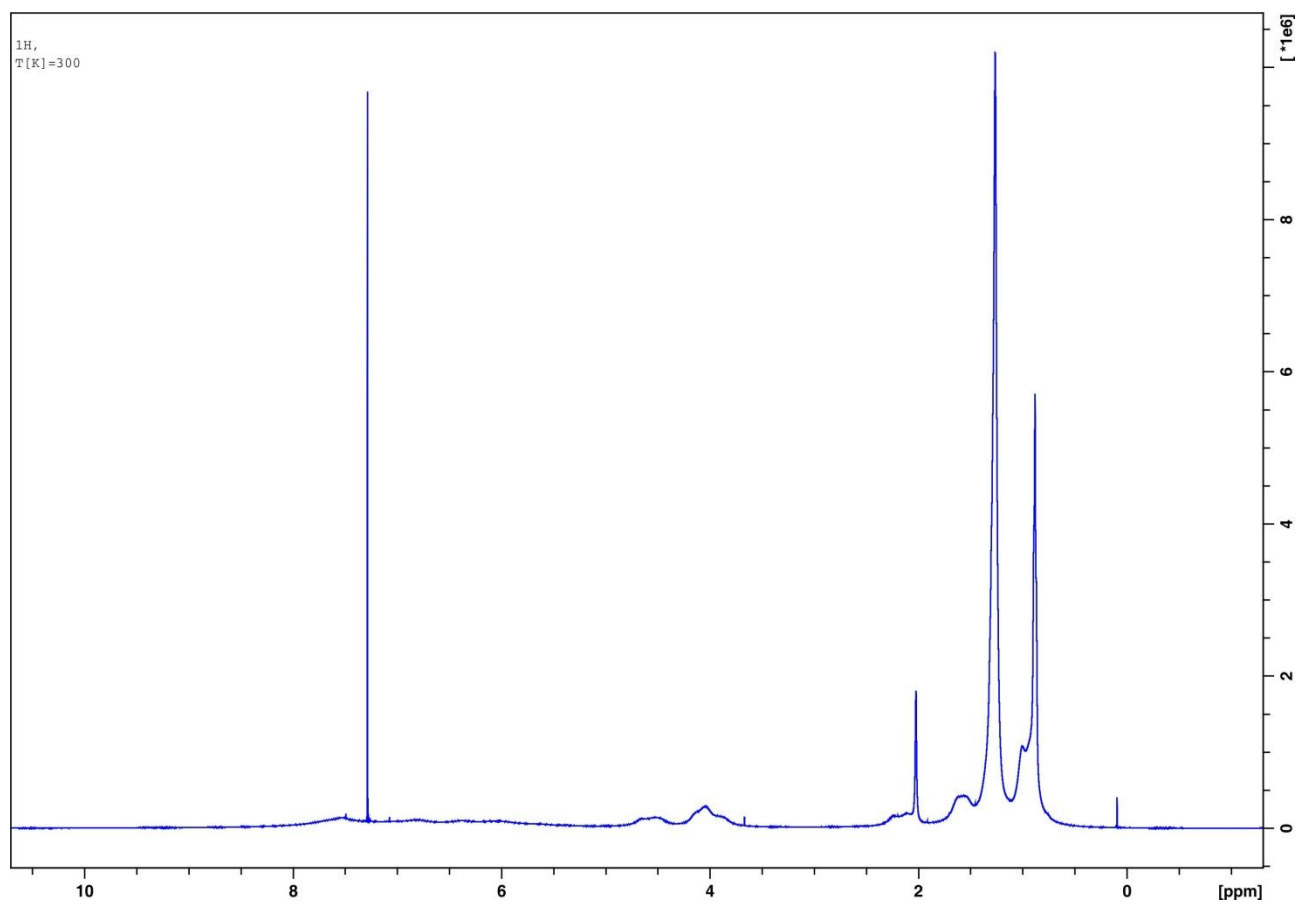


Figure 4: ¹H-NMR (500 MHz, 300 K) spectrum of **PPA-(L)-Val-dec** in CDCl₃ (isotropic).

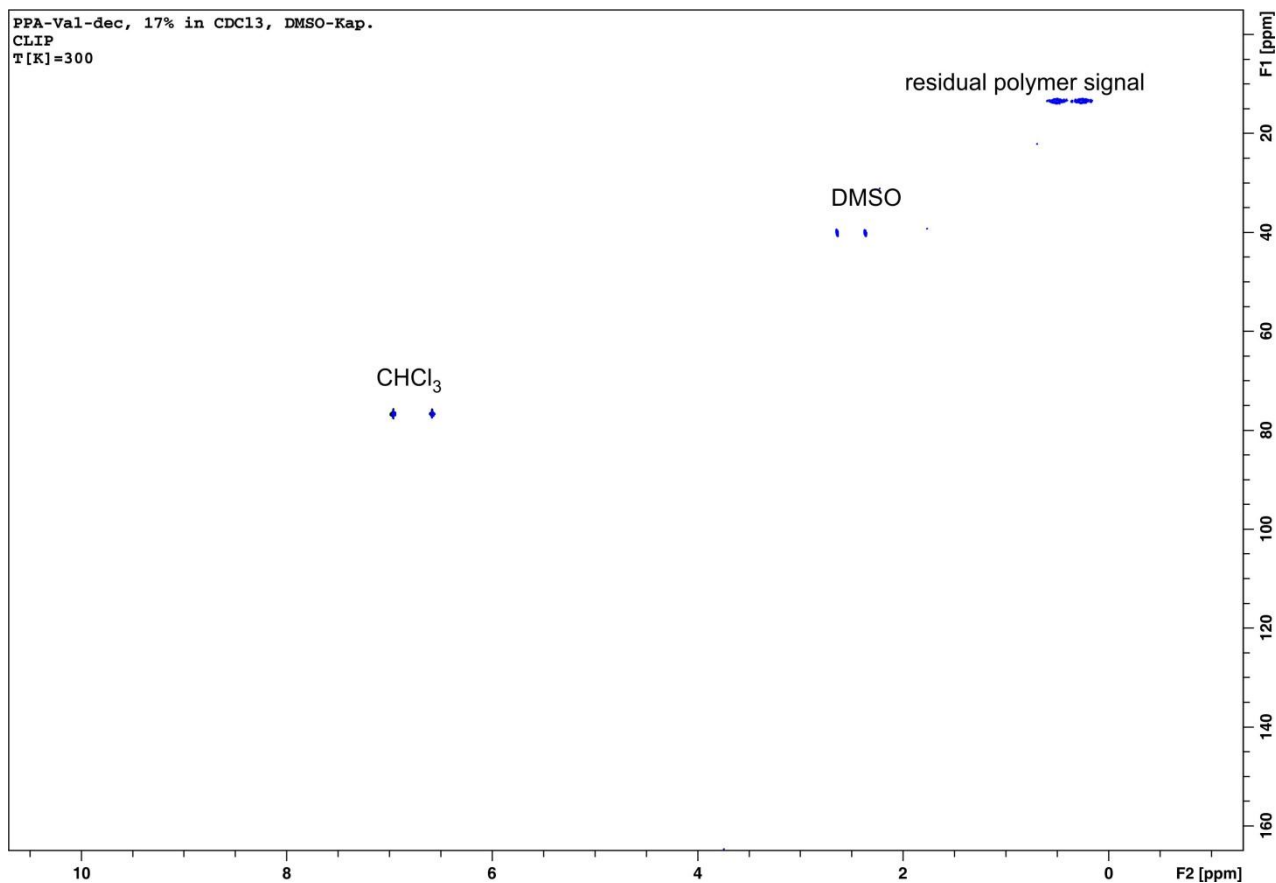


Figure 5: CLIP-HSQC (500 MHz, 300 K, 16 Scans) spectrum of **PPA-(L)-Val-dec** (17% (w/w) LLC phase) in CDCl₃ (anisotropic).

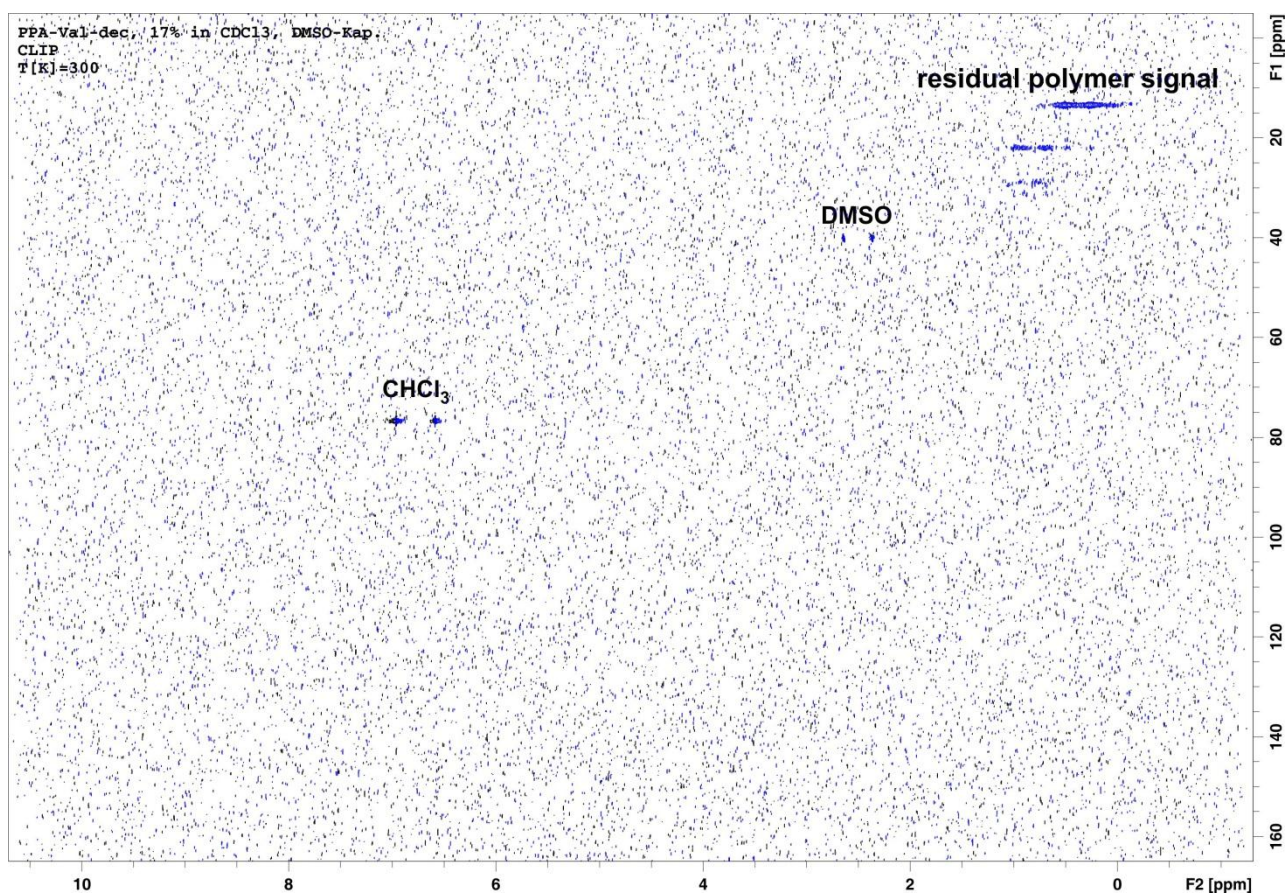


Figure 6: CLIP-HSQC (500 MHz, 300 K, 16 Scans) spectrum of **PPA-(L)-Val-dec** (17% (w/w) LLC phase) in CDCl₃ (anisotropic).